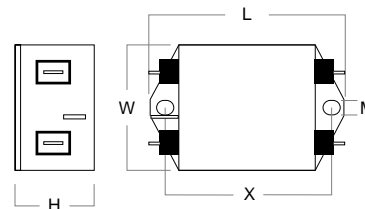


# FSF Series Single Phase RFI Filters 200-250Vac, 48-62Hz

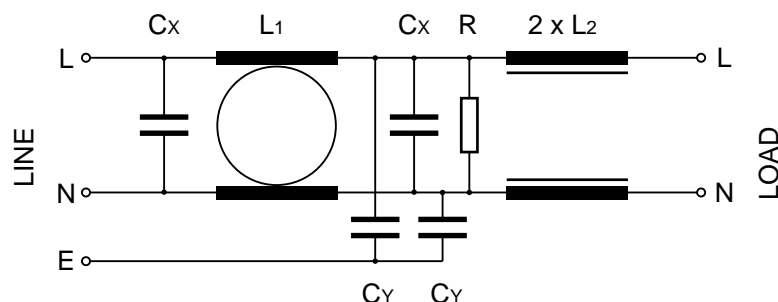
RFI filters for industrial applications up to 16A.  
 All filters are constructed with self-healing X and Y interference suppression capacitors approved to EN132400, CSA & UL. Input and output connections by faston terminals to 12A and shrouded terminals for 16A.  
 All units are manufactured to EN133200 specifications and carry the CE mark.



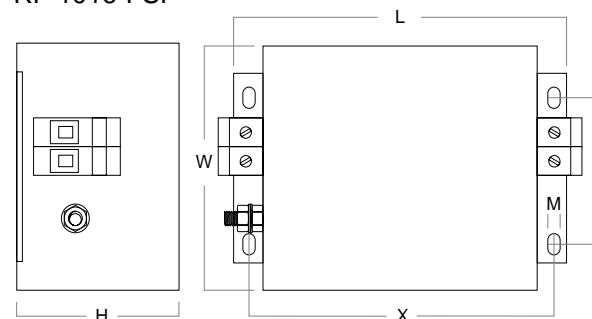
RF 1001-FSF to RF 1012-FSF



Circuit Schematic



RF 1016-FSF



Filter part no.	Rated Current @ 40°C (A)	Leakage Current @ 250Vac 50Hz (mA)	L1 mH	L2 μH	Cx μF	Cy nF	R MΩ	Terminals (mm <sup>2</sup> )	Case Dimensions L x W x H (mm)	Mounting X x Y x M (mm)	Filter Case
RF 1001-FSF	1	0.4	22	490	0.33	4.7	1	faston	85 x 54 x 30	75 x M5	FNB-1
RF 1003-FSF	3	0.4	9.8	160	0.47	4.7	0.47	faston	85 x 54 x 40	75 x M5	FNC-1
RF 1006-FSF	6	0.4	7.8	110	1	4.7	0.22	faston	114 x 58 x 45	103 x M4	FND-1
RF 1010-FSF	10	0.4	4.5	60	1	4.7	0.22	faston	156 x 58 x 45	143 x M5	FNE-1
RF 1012-FSF	12	0.4	3.25	50	1	4.7	0.22	faston	156 x 58 x 45	143 x M5	FNE-1
RF 1016-FSF	16	0.4	2.8	43	1	4.7	0.22	0-6	119 x 86 x 58	109 x 51 x M4	FNF-1