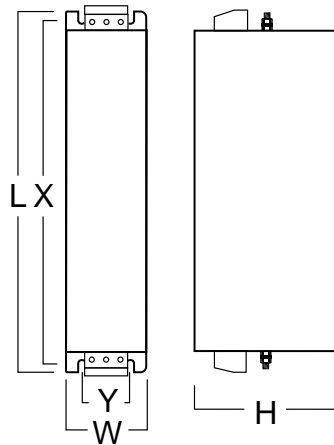




- Single stage, medium performance filters suitable for motor drive, industrial control, UPS & machine tool applications
- All models CE marked.
- All models are UL recognised (File No. E205129).
- Shrouded terminals for input & output connections.
- Flexible mounting for minimum panel space occupation.
- Ex stock. Delivery within 3 days.

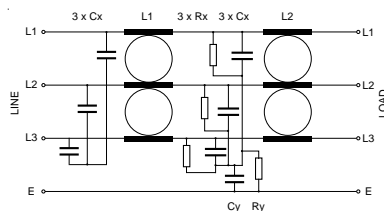


Dimensions

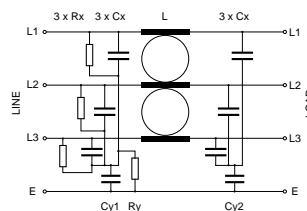


Filter Part No	Rated Current @ 40°C	Leakage Current @ 440Vac 50Hz nom - max	Terminals (mm ²)	Earth Stud	Case Dimensions L x W x H (mm)	Mount Dims X x Y x M (mm)	Weight (kg)	Price (£)
RF 3007-FTF	7A	0.7 - 68mA	0-6	M5	190 x 40 x 70	175 x 20 x M5	0.5	40.00
RF 3016-FTF	16A	1.3 - 130mA	0-6	M5	250 x 45 x 70	235 x 25 x M5	0.9	49.00
RF 3030-FTF	30A	0.7 - 68mA	0-10	M5	270 x 50 x 85	255 x 30 x M5	1.1	76.00
RF 3042-FTF	42A	1.3 - 130mA	0-10	M6	310 x 50 x 85	295 x 30 x M5	1.2	99.00
RF 3055-FTF	55A	1.3 - 130mA	0-25	M6	250 x 85 x 90	235 x 60 x M5	1.8	117.00
RF 3075-FTF	75A	2.0 - 160mA	0-25	M6	270 x 80 x 135	255 x 60 x M6	2.2	139.00
RF 3100-FTF	100A	2.0 - 160mA	16-70	M10	270 x 90 x 150	255 x 65 x M6	2.8	175.00
RF 3130-FTF	130A	2.0 - 160mA	16-70	M10	270 x 90 x 150	255 x 65 x M6	3.1	216.00
RF 3180-FTF	180A	2.5 - 180mA	25-120	M10	380 x 120 x 170	365 x 102 x M6	5.7	250.00

Circuit Schematic
7-55A



75-180A



Visit our website www.rasmi.com for further information.

All items are Ex stock, delivery made within 3 days of receipt of order.

Quantity discount available.

RASMI ELECTRONICS LTD

Morrison Road, Annfield Plain, Stanley, Co. Durham, DH9 7RX, England.

email: sales@rasmi.com Tel: +44 (0)1207 291300 Fax: +44 (0)1207 291304