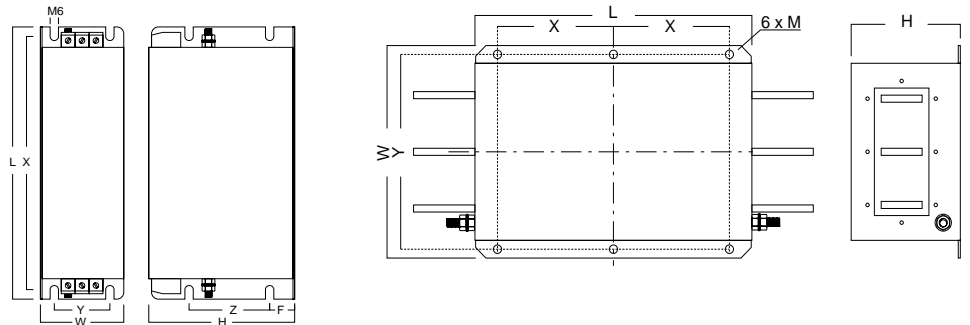




- Multi stage, high performance filters suitable for motor drive, industrial control, UPS & machine tool applications
- All models CE marked.
- Models up to 800A are UL recognised (File No. E205129).
- Shrouded terminals for input & output connections up to 180A, busbars 250A +.
- Flexible mounting for minimum panel space occupation.
- Ex stock. Delivery within 3 days

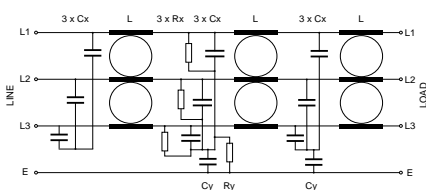


Dimensions 6 - 180A 250 - 800A

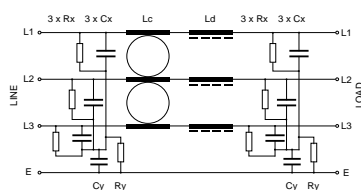


Filter Part No	Rated Current	Leakage Current @ 440Vac 50Hz nom - max	Terminals (mm ²)	Earth Stud	Case Dimensions L x W x H (mm)	Mount Dims X x Y x Z x F (mm)	Weight (kg)	Price (£)
RF 3006-MHU	6A @ 40°C	0.2 - 14mA	0-6	M5	255 x 50 x 126	240 x 25 x 80 x 20	1.4	45.00
RF 3010-MHU	10A @ 40°C	0.2 - 14mA	0-6	M5	255 x 50 x 126	240 x 25 x 80 x 20	1.4	55.00
RF 3016-MHU	16A @ 40°C	0.2 - 14mA	0-10	M5	305 x 60 x 160	290 x 30 x 100 x 20	2.2	85.00
RF 3025-MHU	25A @ 40°C	0.2 - 14mA	0-10	M5	305 x 60 x 160	290 x 30 x 100 x 20	2.4	110.00
RF 3040-MHU	40A @ 40°C	0.3 - 40mA	0-25	M6	329 x 70 x 190	314 x 45 x 100 x 30	3.2	130.00
RF 3050-MHU	50A @ 40°C	0.3 - 40mA	0-25	M6	329 x 70 x 190	314 x 45 x 100 x 30	3.4	155.00
RF 3070-MHU	70A @ 40°C	0.7 - 70mA	6-35	M6	329 x 80 x 220	314 x 55 x 120 x 30	5.3	195.00
RF 3100-MHU	100A @ 40°C	0.7 - 70mA	16-70	M8	379 x 90 x 220	364 x 55 x 120 x 30	5.6	240.00
RF 3130-MHU	130A @ 40°C	1.3 - 130mA	25-120	M10	429 x 110 x 240	414 x 80 x 90 x 30	7.1	280.00
RF 3180-MHU	180A @ 40°C	1.3 - 130mA	25-120	M10	429 x 110 x 240	414 x 80 x 90 x 30	7.5	360.00
			Busbar (mm)			X x Y x M		
RF 3250-MHU	250A @ 40°C	10 - 500mA	25 x 5	M12	300 x 260 x 135	120 x 235 x M10	13.0	460.00
RF 3320-MHU	320A @ 40°C	10 - 500mA	25 x 6	M12	300 x 260 x 135	120 x 235 x M10	13.2	520.00
RF 3400-MHU	400A @ 40°C	10 - 500mA	25 x 6	M12	300 x 260 x 135	120 x 235 x M10	13.2	650.00
RF 3600-MHU	600A @ 25°C	10 - 500mA	25 x 8	M12	300 x 260 x 135	120 x 235 x M10	13.6	860.00
RF 3800-MHU	800A @ 25°C	10 - 500mA	40 x 8	M12	350 x 280 x 150	145 x 255 x M10	23.7	980.00
RF 31K0-MHU	1000A	10 - 500mA	40 x 8	M12	350 x 280 x 150	145 x 255 x M10	24.0	1200.00
RF 31K6-MHU	1600A	2 - 200mA	60 x 10	M12	400 x 300 x 160	170 x 275 x M10	34.0	1600.00

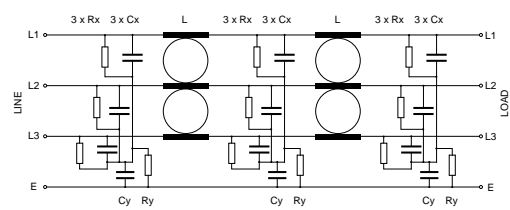
Circuit Schematic
Filters rated 6-50A



Filters rated 70-180A



Filters rated 250 - 1600A



RASMI ELECTRONICS LTD

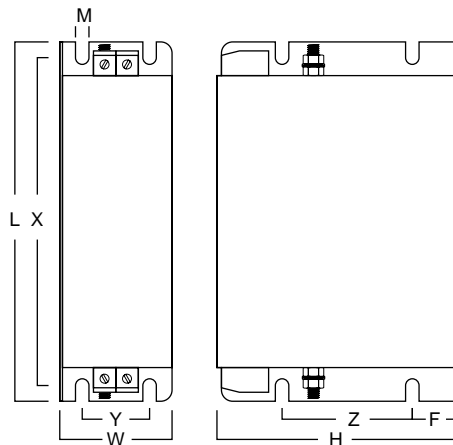
Morrison Road, Annfield Plain, Stanley, Co. Durham, DH9 7RX, England.
 email: sales@rasmi.com Tel: +44 (0)1207 291300 Fax: +44 (0)1207 291304



- Multi stage, high performance filters suitable for motor drive, industrial control, UPS & machine tool applications
- All models CE marked.
- Models up to 35A are UL recognised (File No. E205129).
- Shrouded terminals for input & output connections.
- Flexible mounting for minimum panel space occupation.
- Ex stock. Delivery within 3 days

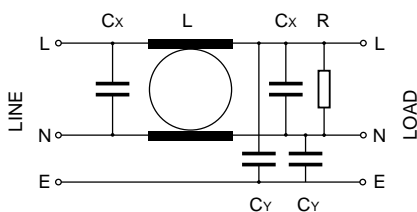


Dimensions

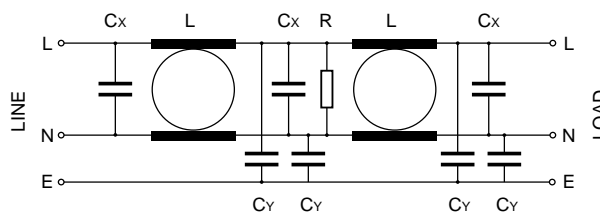


Filter Part No	Rated Current @ 40°C	Leakage Current @ 250Vac 50Hz	Terminals (mm ²)	Earth Stud	Case Dimensions L x W x H (mm)	Mount Dims X x Y x Z x F x M (mm)	Weight (kg)	Price (£)
RF 1010-MHU	10A	7.0mA	0-6	M5	160 x 50 x 109	146 x 30 x 50 x 30 x M5	0.8	12.00
RF 1016-MHU	16A	7.0mA	0-6	M5	160 x 50 x 109	146 x 30 x 50 x 30 x M5	0.9	14.00
RF 1025-MHU	25A	3.5mA	0-10	M5	240 x 60 x 122	225 x 40 x 50 x 33 x M5	1.4	20.00
RF 1035-MHU	35A	3.5mA	0-10	M5	240 x 60 x 122	225 x 40 x 50 x 33 x M5	1.7	24.00
RF 1052-MHU	52A	3.5mA	0-10	M6	290 x 60 x 152	272 x 40 x 70 x 33 x M6	3.0	45.00

Circuit Schematic
Filters rated 10, 16A



Filters rated 25,35, 52A



Visit our website www.rasmi.com for further information.
All items are Ex stock, delivery made within 3 days of receipt of order.
Quantity discount available.

RASMI ELECTRONICS LTD

Morrison Road, Annfield Plain, Stanley, Co. Durham, DH9 7RX, England.
email: sales@rasmi.com Tel: +44 (0)1207 291300 Fax: +44 (0)1207 291304