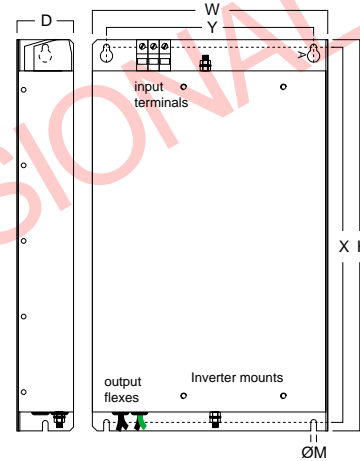


# RF 1xxx-SMD Series Footprint RFI Filters 180-250Vac, 48-62Hz

RFI footprint filters for use with Lenze SMD series inverters.  
Single phase models for 250V inverters from 0.37 to 2.2kW,

Input connections by shrouded type terminals.  
Output flexes connect directly into inverter inputs.  
All units carry the CE mark.

Circuit diagram



PROVISIONAL

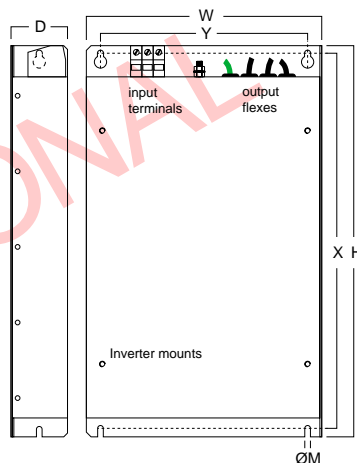
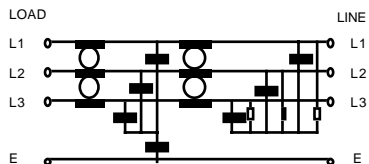
Inverter part no.	Filter part no.	Rated Current (A) @ 40°C	Leakage Current (mA)	Terminals (mm <sup>2</sup> )	Earth Stud	Case Dimensions			Mounting			Inverter Fixings
						H	W	D (mm)	X	Y	M (mm)	
ESMD371L2YXA												
ESMD751L2YXA	RF 1010-SMD	10	3.5	0-6	M5	180	102	38	168	76	M4	4 x M4
ESMD112L2YXA												
ESMD152L2YXA	RF 1020-SMD	20	3.5	0-6	M5	180	124	38	168	95	M4	4 x M4
ESMD222L2YXA												

# RF 3xxx-SMD Series Footprint RFI Filters 380-480Vac, 48-62Hz

RFI footprint filters for use with Lenze SMD series inverters.  
Three phase models for 480V inverters from 0.37 to 22kW.

Input connections by shrouded type terminals.  
Output flexes connect directly into inverter inputs.  
All units carry the CE mark.

Circuit diagram



Inverter part no.	Filter part no.	Rated Current (A) @ 40°C	Leakage Current nom / max (mA)	Terminals (mm <sup>2</sup> )	Earth Stud	Case Dimensions			Mounting			Inverter Fixings
						H	W	D (mm)	X	Y	M (mm)	
ESMD371L4TXA	RF 3005-SMD	5	0.3 / 30	0-6	M5	180	102	38	435	125	M6	4 x M6
ESMD751L4TXA												
ESMD112L4TXA												
ESMD152L4TXA	RF 3014-SMD	14	0.3 / 14	0-6	M5	180	124	45	168	95	M4	4 x M4
ESMD222L4TXA												
ESMD302L4TXA												
ESMD402L4TXA												
ESMD552L4TXA	RF 3027-SMD	27	0.3 / 32	0-10	M5	230	156	50	218	125	M4	4 x M4
ESMD752L4TXA												
ESMD113L4TXA												
ESMD153L4TXA	RF 3052-SMD	52	0.3 / 32	0-25	M5	296	228	60	279	200	M6	4 x M6
ESMD223L4TXA												